

This issue of Just CADDING sees the first maintenance release of VectorWorks 12 become available, along with information about Intel Macs, training courses and the ever popular tips and tricks section. If you would like to share any tips or tricks you have discovered, please send them through to [support@ozcad.com.au](mailto:support@ozcad.com.au) and we will see they get included in the next edition.

### ■ VectorWorks 12.0.1 Released

VectorWorks 12.0.1 is now available for download from our web site. [Click here](#) to jump to the downloads page or [click here](#) to open the PDF file describing the new or changed features. These include:

- Improved polygon snapping
- Viewports can now be updated regardless of the out-of-date indicator (red dashed line)
- Section viewports now support perspective projection
- A new DTM parameter that sets the triangulation interval along contour lines
- Wall styles in Architect now support class attributes
- Plant objects in Landmark can now use Image Props as their 3D component
- Spotlight can now add light objects to any lighting device then render light beams, by implementing the Lit Fog option in RenderWorks.

### ■ New OzCAD Web Site

OzCAD has launched a new web site for Vectorworks 12. If your browser continues to connect to the old web site you will need to empty the cache to link to the new site. 'Empty cache' can be found under one of the drop down menus on your web browser.

The new web site offers you easy navigation through detailed information for all the modules in version 12. There are feature movies, new feature lists, downloadable brochures and PDFs for system requirements. We hope that this web site helps you find the information that you need quickly and easily. If you have images that you would like to contribute to the gallery, please send them through to us.

### ■ Intel Macs

Apple have recently released the first generation of machines that contain Intel processors. Although this is a welcome development in the long term, there are short term implications if considering the purchase of one of these new machines.

[Click here](#) for more detailed information, but in a nut shell we are recommending against purchasing Intel Macs for use with VectorWorks, until such time as a Universal version of VectorWorks 12 is available later in the year (a free upgrade to existing 12 users).

### Contents

- VectorWorks 12.0.1 Released
- New OzCAD Web Site
- Intel Macs
- Training CDs for VectorWorks 12
- Training Courses
- VectorWorks 12 Demonstrations
- Tips and Tricks

### ■ VectorWorks 12 Training CDs

For those of you who have been waiting, we now have stock of training CDs for version 12. There are CDs for Fundamentals, Architect, Landmark, Spotlight and RenderWorks. [Click here](#) for more information.

### ■ Sydney Training Courses

We are pleased to announce that hands-on training courses for VectorWorks will be starting soon in Sydney's Eastern and Northern suburbs. Conducted by experienced and respected VectorWorks trainers, course information is being posted on our web site under Support/Courses, as the details of each session are finalised.

### ■ Melbourne Training Course

Jane Kanizay will be conducting training sessions in the near future as follows:

**Title:** Beginners Training Sessions 1 and 2

**Dates:** Monday 27 March and Monday 3 April 2006

**Times:** 9:30am - 1:30pm

**Location:** 399 St Kilda Street, Brighton.

**Cost:** \$240.00 per session (\$264 inc. GST).

Morning tea / light lunch included.

**Contact:** Jane Kanizay

**Tel:** 03 9530 8808

**Mobile:** 0414 357 783;

**Email:** [jane@jafar.com.au](mailto:jane@jafar.com.au)

### ■ Sydney VectorWorks Demonstrations

For those of you who have friends wishing to see VectorWorks in action, or if you would like to see the latest version yourself or look at the features of Architect or Landmark, Julian will be presenting the program at our office on the following dates -  
 Tuesday 21st March 5:00pm - Vectorworks Architect  
 Wednesday 22nd March 5:00pm - Vectorworks Landmark  
 Please call or email if you would like to join us.

### Melbourne VectorWorks Demonstrations

Please contact Jane Kanizay on 0414 357 783 or email [jane@jafar.com.au](mailto:jane@jafar.com.au) to arrange a Melbourne presentation.

## ■ Tips and Tricks

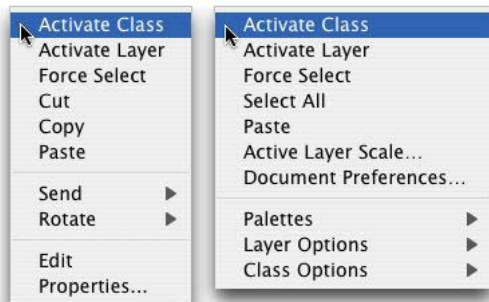
### ■ Displaying VectorWorks drawings in a Word document.

(contributed by John Macphail of macphail & sproul architects)

Frequently when preparing a report, it is necessary to include some parts of a VectorWorks drawing for illustrative purposes. If you are using Viewports the process is as simple as copying the viewport, switching to Word then pasting. Once done, the resulting image can be scaled or made transparent. It also doesn't matter if the viewport has a crop or annotations. What you see in VectorWorks is what will come through in Word.

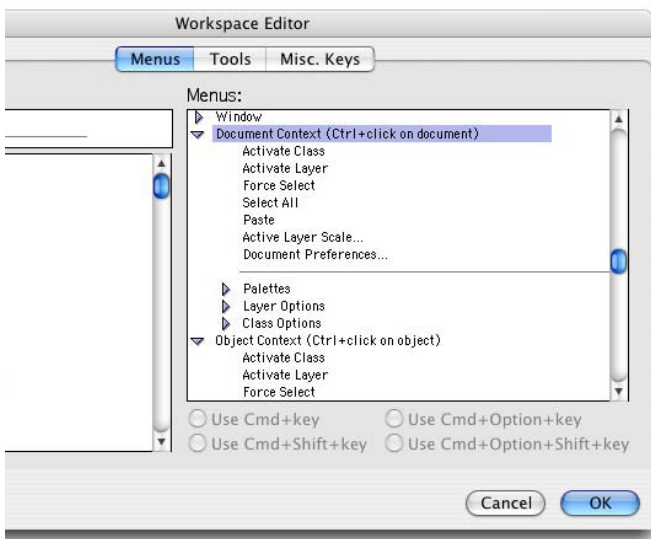
### ■ Customising Contextual Menus

Most users should now be aware that right clicking (Ctrl clicking on a Mac) brings up a Contextual menu with a number of choices in it. Depending on whether you click on an object or just in space on the drawing, different items will appear. These have been expanded in VectorWorks 12 to include things like Force Select and Activate Class.



Object Contextual Menu Document Contextual Menu

What many users don't realize is that you can add any menu command to the Contextual menus using the Workspace Editor, making them much more accessible. Simply launch the Editor, click the Menu tab, expand one or other of the contextual menus in the right hand pane then drag the desired items from the left hand pane to the desired position in the right.

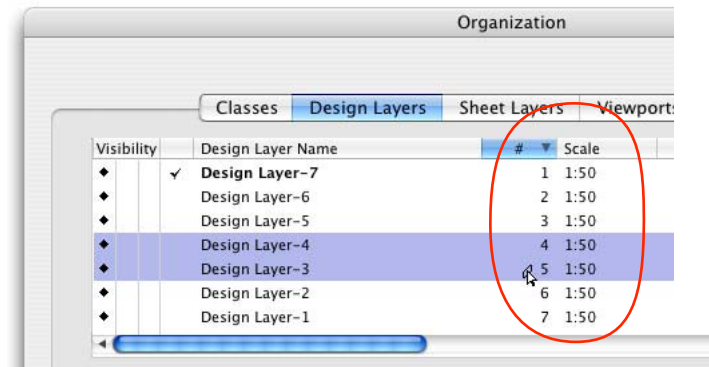


Workspace Editor

### ■ How do I change the layer stacking order in VectorWorks 12?

Re-arranging the stacking order of design layers can be done in either the Organisation dialogue or in the Navigation palette (for Design Series products). The up and down buttons have been replaced by the easier drag and drop method. Position the cursor under the stacking order column labelled with a #, look

for the cursor shape to change, then drag the selected layer or layers to the desired location. Because you can sort the layer list by clicking in any of the column headers, it is advisable to first click in the # column header so the list is being sorted by layer stacking order.



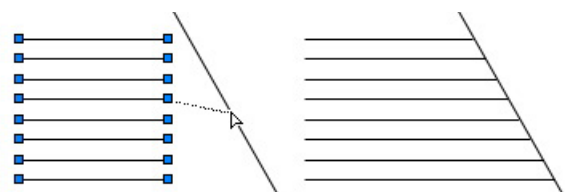
Organisation Dialogue

### ■ Sorting Columns in the Organisation Dialogue or Navigation Palette.

In VectorWorks 12, you now have the ability to sort the order of columns in both the *Organisation* dialogue and the *Navigation* palette (Design series only). This can be done by simply clicking in any of the column headers. Multiple clicking in the same header will toggle the sort order from ascending to descending. Why is this useful? Well, clicking in the class or layer visibility column header will put all the visible classes or layers at the top (or bottom) of the list. Clicking in the *Use* column header in the classes tab will bring all classes using class attributes to the top (or bottom) of the palette. Get the idea?

### ■ How do I get the Connect/Combine tool to extend multiple lines in one go?

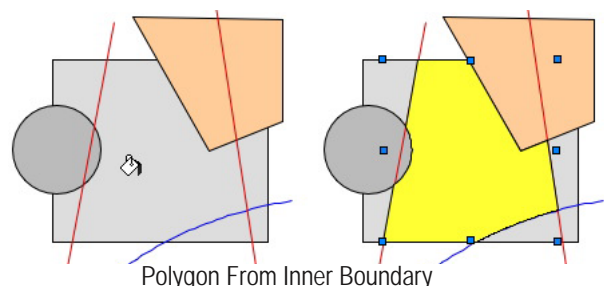
When using the Connect/Combine tool to extend lines to another line or boundary, press the Alt/Option key while connecting one of the lines and all selected lines will be extended at the same time.



Connect/Combine Tool

### ■ What is the easiest way to fill an area bounded by other 2D objects, such as lines, polygons, arcs or circles?

The *Polygon* tool has a new mode in VectorWorks 12 called *Polygon From Inner Boundary*. By selecting the tool, clicking this button in the Mode Bar (it looks like a pouring paint bucket), then clicking in the area you wish to fill, a polygon or polyline will be created matching the boundary objects.



Polygon From Inner Boundary