

After much anticipation, we are pleased to formally announce the arrival of VectorWorks 12 in Australia. This exciting new version has nearly as many new features as the previous three versions combined, so we are confident you will not only find it more productive, but also easier to use. For a complete list of new and improved features click the following link to download the [What's New in VW12?](#) pdf. For pricing and availability, please email sales@ozcad.com.au.

Most of this issue is devoted to the new release, however we did still manage to squeeze in a couple of tips and tricks at the end.

■ Changes in the Product Line

VectorWorks 12 sees some name changes to the previous line up. The base version is now called *Fundamentals*, to focus on the requirements of designers looking to do basic drafting and modelling, *Mechanical* is now called *Machine Design* to better reflect its target market, and the *Industry Collection* is now called *Designer*.

Architect, *Landmark* and *Spotlight* retain their names, but are now referred to as the *Design Series*. As well as its new name, *VectorWorks Designer* now comes with an integrated workspace to better access features from a number of design disciplines at once.

■ New Upgrade Format and Manuals

Nemetschek North America has introduced a new upgrade format for version 12, bringing it into line with other software developers and giving users a choice in pricing and inclusions. The standard upgrade for all products comes in revised upgrade packaging and includes installation disks, upgrade companion CD and serial number. The manuals are on PDF and are also immediately available in the searchable on-line help system. This will be the best solution for users who have reported that they rarely consult hard-copy manuals and who wish to support the reduction in wastage produced by the mass inclusion of paper manuals.

All manuals are now consolidated into just two books — *Fundamentals* (which includes *RenderWorks*) and the *Design Series* (which includes *Architect*, *Landmark*, *Machine Design* and *Spotlight*).

For users who choose to have hard copy manuals, they are available for \$35.00 + GST for *Fundamentals*, or \$50.00 + GST for *Fundamentals* and the *Design Series*. Manuals will be available for purchase throughout the version so it would seem reasonable to take up the new CD option first and see how it works for you.

Contents

- Changes in the Product Line
- New Upgrade Format and Manuals
- Training Materials
- Adding a Module
- Renderworks 12
- Version 12 System Requirements
- Cross-Platform Versions Available
- Artlantis R Now Shipping
- OzCAD Web Site
- Sydney VectorWorks 12 Demonstrations
- Melbourne VectorWorks 12 Demonstrations
- Tips and Tricks

■ Training Materials

Free CDs

VectorWorks 12 ships with two new training resources, the Upgrade Companion CD and the Core Concepts CD.

The Upgrade Companion CD ships for free with all upgrade orders. Designed to give existing VectorWorks users a jump start into VectorWorks 12, this convenient CD provides detailed explanations and illustrations of the new capabilities in version 12. Advanced features are explained in detail with narrated animations and instructions on how to integrate them into existing workflows. All topics are linked to the VectorWorks 12 on-line help system for added explanation.

The VectorWorks Core Concepts CD ships for free with all new orders. It is designed to help users who are unfamiliar with VectorWorks (or who are new to CAD) get up and running quickly. It introduces the VectorWorks drawing environment to users and reviews basic drawing and modelling techniques. It provides users with an overview of VectorWorks database/worksheet and scripting capabilities and also explains core concepts, such as printing, import/export options and ways to find additional help.

Professional Learning Series CDs

For users who would like to purchase additional resources, the popular PLS CDs will be available to support VectorWorks 12. Following on from the Core Concepts CD is a single CD for Fundamentals and a double set for Architect, Spotlight and Landmark. A single Renderworks training CD is also available.

QuickTime Tutorials in Architect Australia

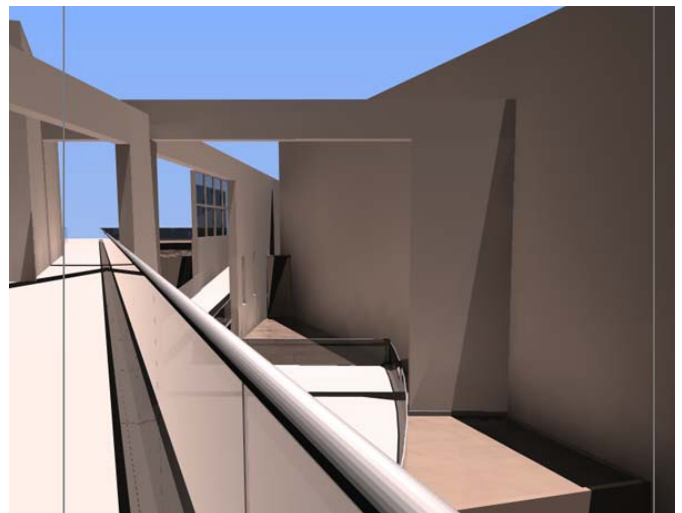
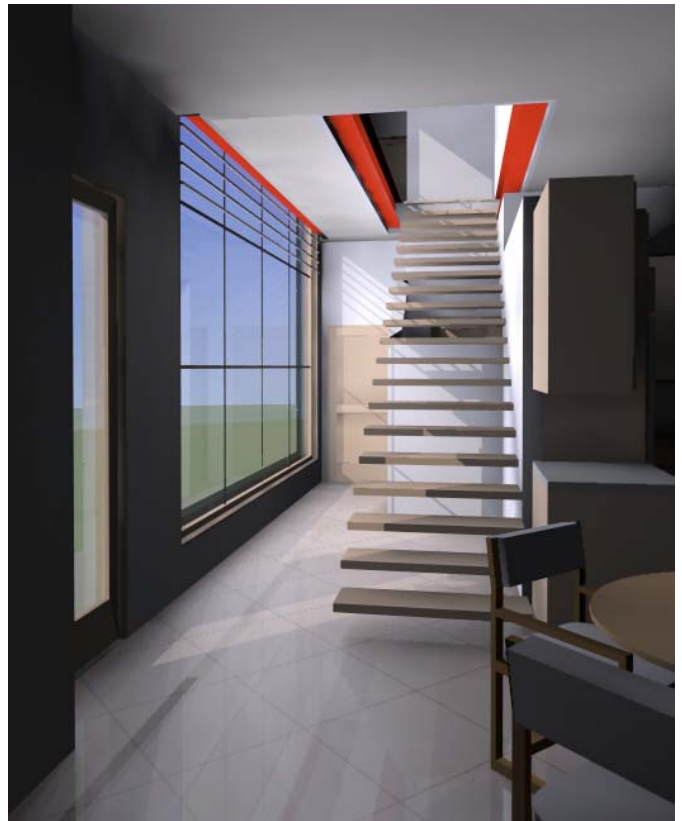
Architect Australia includes a number of movies that explain how to use its main features. These can be accessed by choosing VAANZ Movies from the VectorWorks 12 Window menu.

■ Adding a Module

If you are considering adding a *Design Series* module such as *Architect* or *Landmark*, or *RenderWorks* module, then it is most economical to add it when you upgrade. The component cost of each module is reduced by 25% when added to an upgrade, compared with adding it later in the version.

■ RenderWorks 12

The latest version of RenderWorks has some great new features that can really improve photorealism, particularly for interior renderings. Along with radiosity (the ability for a beam of light to bounce off multiple surfaces, picking up the colour of those surfaces on the way), there are now area lights (these emit uniform light from the surface of any 3D object that has been converted to an area light), line lights (not unlike a neon light tube) and volumetric lighting (enables lights to illuminate the atmosphere). Several examples follow.



■ Version 12 System Requirements

VectorWorks 12 now only works in the following operating systems:

Macintosh OS 10.3.9 and Macintosh 10.4.x.
Windows 2000 SP4 and Windows XP

This means the following operating systems are no longer supported by VectorWorks 12:

Macintosh OS 9 and Macintosh OS 10.2.x
Windows 98 and Windows ME.

■ Cross-Platform Versions Available

Cross-platform professional licenses are now available, which means that a single license can be operated on either a Macintosh or Windows computer. This option requires a small USB dongle to be plugged into which ever machine is being used and costs and additional \$50 + GST per license. Anyone interested in upgrading to a cross-platform license on Vectorworks 12 should enquire at the time of upgrading, as the cross-platform option cannot be retrofitted at any other time.

Artlantis R Now Shipping

We have stock of new and upgrades for Artlantis R. While there is no upgrade path to this new version, there are special prices for owners of Artlantis 4 and 4.5. The original shaders are no longer usable in Artlantis R so stock of new shaders is available as well. Please contact us for details and pricing.

OzCAD Web Site

Our web-site is undergoing renovation to bring it up to date with all the new Vectorworks 12 information. We appreciate your patience while this work is proceeding and hope to be fully functional with the latest information soon. In the meantime please email sales@ozcad.com.au or call us for pricing and information.

Sydney VectorWorks 12 Demonstrations

OzCAD will be presenting VectorWorks 12 Fundamentals and VectorWorks 12 Architect on the following dates:

Monday 21st November 4.30pm

Tuesday 22nd November 4.30pm

Please join us for drinks at 4.30pm for a 5:00 pm presentation.

Location: **Unit 313, 30-40 Harcourt Parade, Rosebery**

Please RSVP to annabel@ozcad.com.au or call 02 8338 8622 to book a place. Numbers are limited.

All Vectorworks users are welcome, however a special Landmark presentation will be announced for the New Year.

Melbourne VectorWorks 12 Demonstrations

Jane Kanizay is offering two VectorWorks 12 presentation events on the following dates:

Thursday 17th November at 4:00pm – Landmark 12

Thursday 24th November at 4:00pm – Architect 12

Location: **1/399 St Kilda Street, Brighton**

Please contact Jane on 0414 357 783 or jane@jafar.com.au to reserve a place.

Tips and Tricks

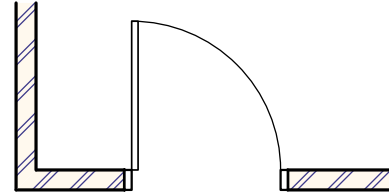
Since switching to Macintosh OS 10.4 (Tiger), why do some older files crash when going to page setup?

Apple made a change in OS 10.4 that in combination with some printer drivers, messes up the print settings within older VectorWorks files, the first time Page Setup is used in Tiger. Fortunately this is easy to fix with a little script that can be run once per file, to reset the printer settings. Once done, the file should behave normally any time it is printed in the future.

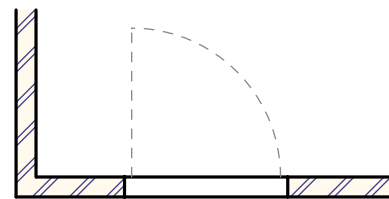
[Click here to download the script.](#) Once downloaded, uncompress the file and move it to a convenient location such as the VectorWorks folder. Now open the file that won't print, choose Run VectorScript from the Organize/Scripts menu, navigate to the script file, click open.

When placing a WinDoor door into a wall in Architect Australia, the wall lines are still visible. Why is this?

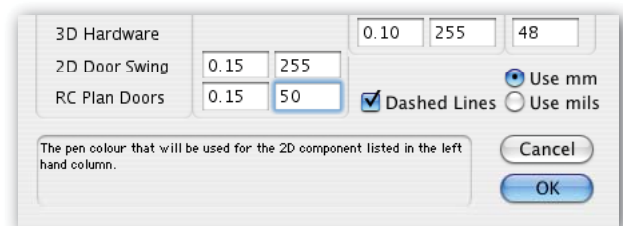
WinDoor (in Architect Australia) has the ability to display doors in two different ways, depending on whether it is for a floor plan or a reflected ceiling plan. This is achieved through the use of class visibility, so you need to make sure the settings are correct for the type of plan you viewing. Setting the WD-2D class to visible and the WD-Ceiling class to invisible, will produce the following result:



Reversing these visibility settings will add the wall lines and show the door as grey and dashed as follows:



The actual grey line colour and whether or not it is dashed, can be controlled at the bottom of the Pen Size and Colour Settings dialogue, which is accessed by clicking the button at the bottom of the Object Info palette.



Suddenly my drawing is covered with dashed lines that extend to infinity in the X and Y directions. Help!

This is most commonly seen in imported DWG files and although the dashed lines won't print, it is easy to turn them off. Simply go to *VectorWorks Preferences* and in the *Edit* tab, uncheck the *Snap to Loci* option.

